

12 Riverview Road, Earlwood, NSW 2206

Landscape Documentation for S4.55



IMAGE TAKEN FROM NEARMAP 2018

Drawing Register

Dwg No.	Drawing Name
S4.55-000	Cover Sheet & Design Statement
S4.55-101	Landscape Site Plan
S4.55-102	Landscape Level 1
S4.55-201	Landscape Elevation North
S4.55-601	Landscape Specification & Details
S4.55-602	Plant Schedule & Images

Design Statement

Landscape Philosophy

These drawings are for the proposed landscaping of 12 Riverview Road, Earlwood, as part of a Development Application. The plans are in accordance with Canterbury Development Control Plan 2012. One canopy tree is planted within each of the front and rear setbacks. Screening shrubs are proposed to each side boundaries. Tree and shrubs are used to reduce the scale of the development and blend into the surrounding landscape. Plant species, selected to replace the removed landscaped embankment, are native and endemic to the local area. Climbers on tensile steel wires are used to create a green wall to the Riverview Road frontage.

Landscape Management

The landscape will be maintained by the Client. A low volume drip irrigation system is recommended to all planters to optimise establishment of the landscape.

SITE PLAN



SCALE: NTS

LEGEND

- 1.8M TIMBER FENCE
- 1.5M PRIVACY SCREEN
- SITE BOUNDARY LINE
- PAVING
- STAIRS
- TIMBER DECK
- GRASSES/
GROUNDCOVERS
- HEDGE
- TURF
- PROPOSED TREES
- SHRUBS
- CLIMBER
- PT

BLOOM POT
- +RL 20.62

PROPOSED LEVELS
- TOW

TOP OF WALL LEVEL



Drawing Title
LANDSCAPE SITE PLAN

DWG No: S4.55-101

GEOSCAPES

LANDSCAPE ARCHITECTS

Suite 215, 284 Victoria Av, Chatswood NSW 2067 Ph. (02) 9411 1485
www.geoscapes.com.au
ABN 84 620 205 781 ACN 620 205 781

Architect:

CAD DRAFT PTY LTD

ABN: 27 083 288 153
PH: 9555 8545
SUIT 4, 670 DARLING STREET, ROZELLE, NSW
P.O BOX 446 GLADESVILLE 2111
info@caddraftnsw.com.au

Scale:
1:50 @ A1
1:100 @ A3

Date:
16.09.2022

Job Number:
170203

North:

Project:

12 Riverview Road
Earlwood, NSW 2206

Revision					FOR \$4.55	
Rev	Date	Description	Drawn	Checked		
A	16.09.22	FOR \$4.55	PT	BG		

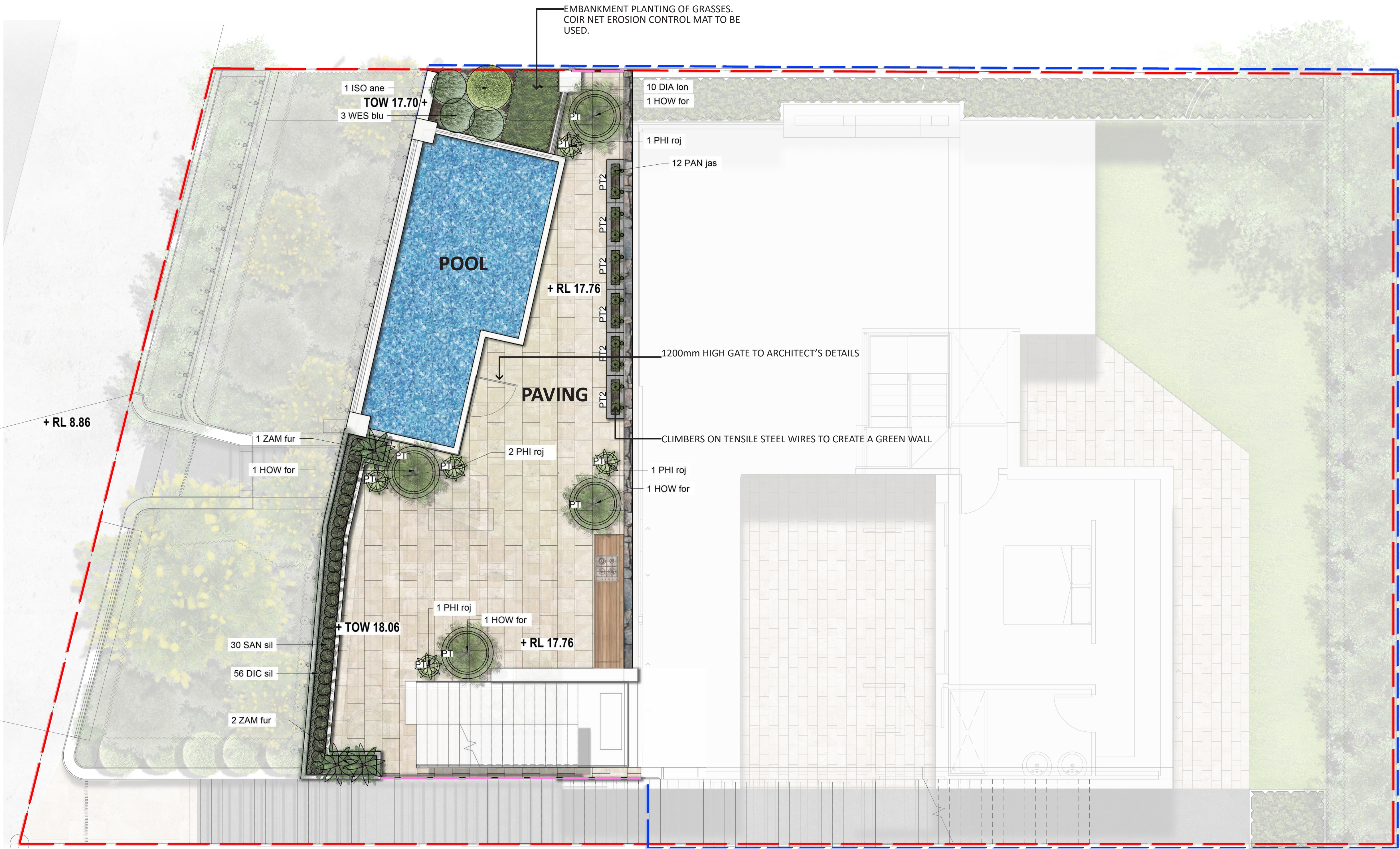
LEGEND

- 1.8M TIMBER FENCE
- 1.8M PRIVACY SCREEN
- SITE BOUNDARY LINE
- PAVING
- GRASSES/
GROUNDCOVERS
- PALM
- SHRUBS
- CLIMBER
- BLOOM POT
- +RL 17.76

PROPOSED LEVELS
- TOW

TOP OF WALL LEVEL
- PT2

NARROW TROUGH PLANTER



Drawing Title
LANDSCAPE LEVEL 1

DWG No: **S4.55-102**

GEOSCAPES
LANDSCAPE ARCHITECTS
Suite 215, 284 Victoria Av, Chatswood NSW 2067 Ph. (02) 9411 1485
www.geoscapes.com.au
ABN 84 620 205 781 ACN 620 205 781

Architect:
CAD DRAFT PTY LTD
ABN: 27 083 288 153
PH: 9555 8545
SUIT 4, 670 DARLING STREET, ROZELLE, NSW
P.O BOX 446 GLADESVILLE 2111
info@caddraftnsw.com.au

Scale:
1:50 @ A1
1:100 @ A3

Date:
16.09.2022

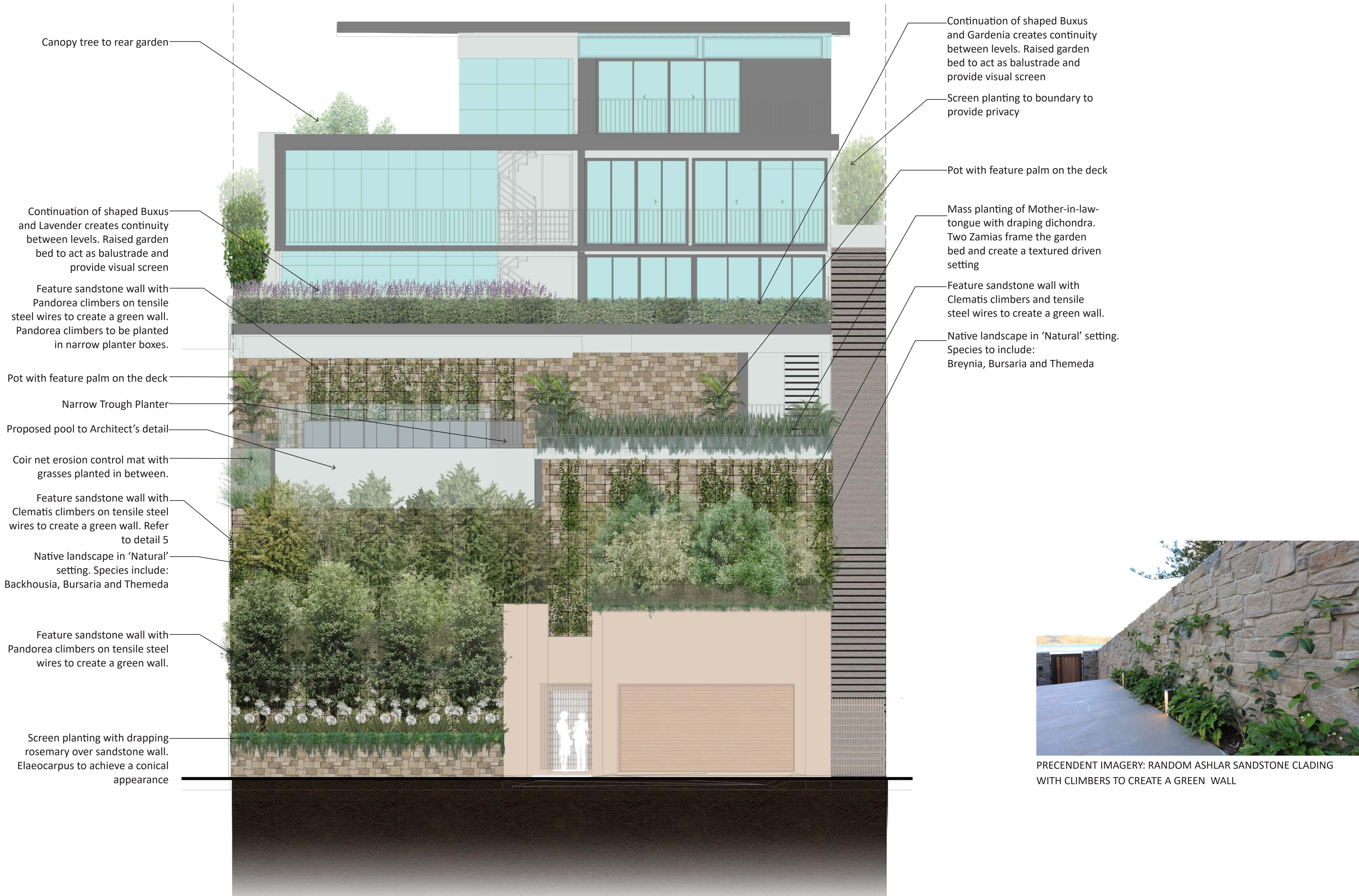
Job Number:
170203

North:

Project:

12 Riverview Road
Earlwood, NSW 2206

Revision					FOR S4.55	
Rev	Date	Description	Drawn	Checked		
A	16.09.22	FOR S4.55	PT	BG		



PRECEDENT IMAGERY: RANDOM ASHLAR SANDSTONE CLADDING WITH CLIMBERS TO CREATE A GREEN WALL

Drawing Title
LANDSCAPE ELEVATION

DWG No: **S4.55-201**

GEOSCAPES
LANDSCAPE ARCHITECTS
Suite 215, 284 Victoria Av, Chatswood NSW 2067 Ph. (02) 9411 1485
www.geoscapes.com.au
ABN 84 620 205 781 ACN 620 205 781

Architect:
CAD DRAFT PTY LTD
ABN: 27 083 288 153
PH: 9555 8545
SUIT 4, 670 DARLING STREET, ROZELLE, NSW
P.O BOX 446 GLADESVILLE 2111 info@caddraftnsw.com.au

Scale:	Date:	Job Number:	North:	Revision		FOR \$4.55		
1:50 @ A1			N/A	Rev	Date	Description	Drawn	Checked
1:100 @ A3	16.09.2022	170203		A	16.09.22	FOR \$4.55	PT	BG
Project:	12 Riverview Road Earlwood, NSW 2206							

MAINTENANCE PLAN

Maintenance shall mean the care and maintenance of the landscape works by accepted horticultural practice as rectifying any defects that become apparent in the landscape works under normal use. The landscape contractor shall attend the site on a **weekly basis for a 12 month period as per development consent condition no.5(e)** to maintain the landscape works commencing from practical completion.

Rubbish Removal

The Landscape Contractor shall undertake rubbish removal from the site on a **weekly basis** to ensure the site remains in tidy condition.

Weed Eradication

Weed growth that may occur in grassed, planted or mulched areas is to be removed using environmentally acceptable methods i.e. non-residual glyphosate herbicide (e.g. ‘Roundup’, applied in accordance with the manufacturer’s direction.

Tree Replacement

Trees shall show signs of healthy vigorous growth and be free from disease and not exhibit signs of stress prior to handover to the client. Any trees or plant that die or fail to thrive, or are damaged or stolen will be replaced. Replacement material shall have the initial maintenance period extended in accordance with the landscape contract conditions. Trees and plant materials shall be equal to the minimum requirements of species specified and approved material delivered to site. Should the condition decline from the approved sample the Superintendent reserves the right to reject the tree / plants. Frequency: as required.

Tree Supply

All the tree supply stocks shall comply with the guidance given in the publication Specifying Trees: a guide to assessment of tree quality by Ross Clark (NATSPEC, 2003).

Stakes

Adjust and/or replace stakes and ties where required. Remove staking and guying when instructed by the Superintendent

Pruning

Selective pruning may be required during the establishment period to promote a balanced canopy structure. These activities shall be carried out to the best horticultural and industry practice. All pruned material is to be removed from site.

Mulched Surfaces

All planter beds and garden areas shall have a minimum depth of 75mm pebble mulch or organic mulch. All mulch is to be free of deleterious matter such as soil, weeds, sticks and should conform to AS 4454. Mulched surfaces are to be kept clean and tidy and free of any deleterious material and foreign matter. Reinstate depths to a uniform level of 75mm with mulch as specified, mulch to be free of any wood material impregnated with CCA or similar toxic treatment. Top up mulch levels prior to handover to client & estate management.

Watering

Implement an appropriate hand watering regime in areas not irrigated in association with current watering programme to maintain plant health and vigour. The program shall reflect seasonal conditions and plant species. Frequency: Weekly or as required.

Soil In Natural Ground

Non-Australian native garden beds to have soil installed consisting of 50% existing site topsoil and 50% new topsoil equal or equivalent to ‘Organic Garden Mix’ as supplied by Australian Native Landscapes. Australian native garden beds to have soil installed consisting of 50% existing site topsoil and 50% new topsoil equal or equivalent to ‘Native Low ‘P’ Mix’ as supplied by Australian Native Landscapes. Soil to conform to AS4419 refer to typical detail.

Pest and Disease Control

The Landscape Contractor shall spray for pests and disease infestations when the pest and fungal attack has been positively identified and when their populations have increased to a point that will become detrimental to plant growth. Apply all pesticides to manufacturer’s directions. Frequency: weekly inspection

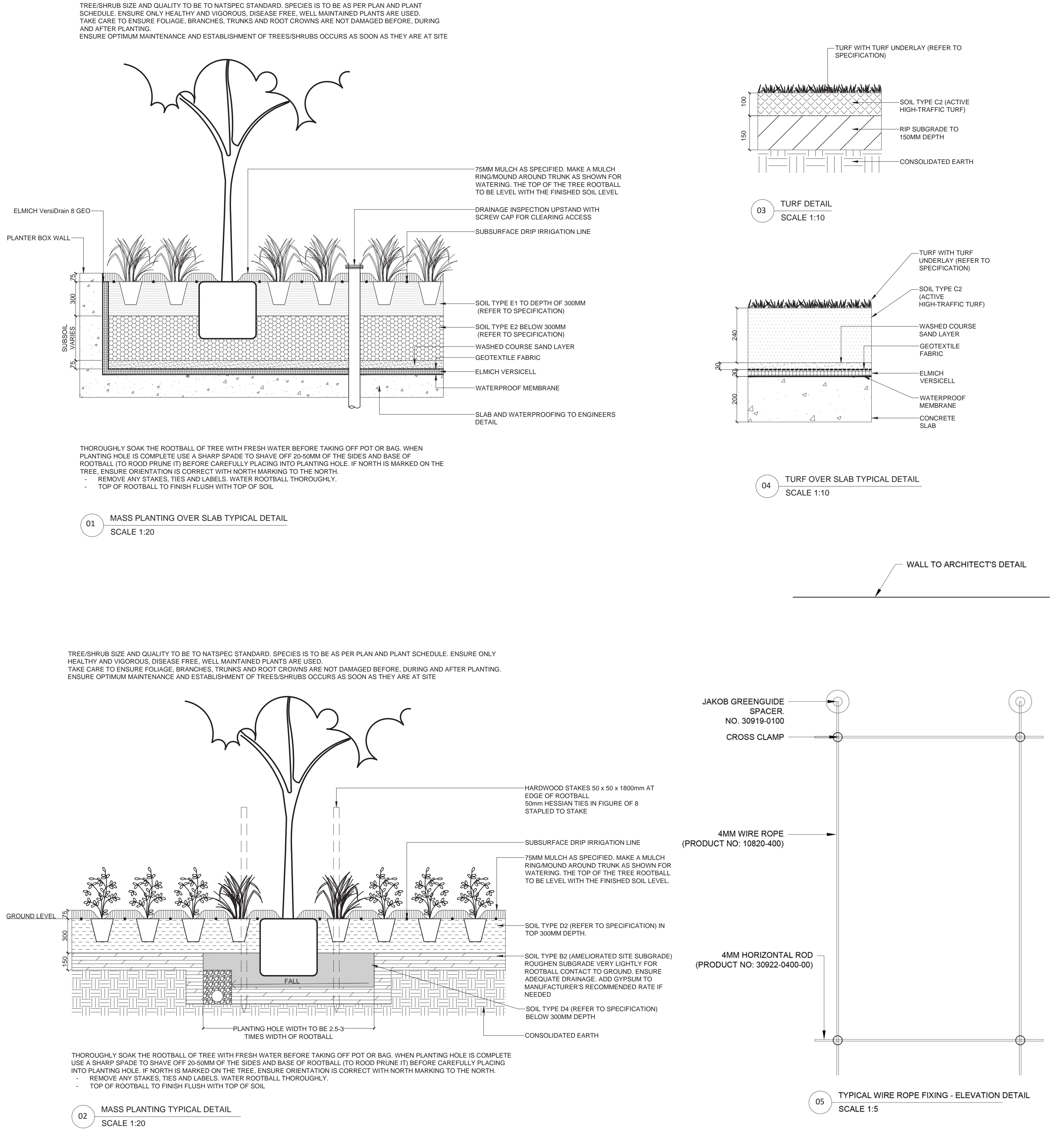
Fertilising

Generally check for signs of nutrient deficiencies (yellowing of leaves, failure to thrive), and adapt fertiliser regime to suit. Fertiliser should be applied at the beginning and the end of the (summer) growing season.

Irrigation

A sub surface dripper style, electrically automated self timed irrigation system is to be supplied to all garden bed areas and planter container. Regular checks are to be made to ensure continued successful operation. The Landscape Contractor shall be responsible for coordination and engagement of a specialist irrigation designer and installation contractor to design, supply and install an automatic subterranean drip irrigation system to all raised planter beds. The irrigation system will need to provide designated landscaped areas with enough water for vigorous healthy plant growth. As a general rule landscaped areas will need 20-25mm, species dependant, of water per week. The landscape Contractor will need to monitor natural rainfall using a rain switch in order to set irrigation flow rates accordingly on a monthly basis.

TYPICAL LANDSCAPE DETAILS



Drawing Title

TYPICAL SPECIFICATION & DETAILS

DWG No:

S4.55-601

GEOSCAPES
LANDSCAPE ARCHITECTS
Suite 215, 284 Victoria Av, Chatswood NSW 2067 Ph. (02) 9411 1485
www.geoscapes.com.au
ABN 84 620 205 781 ACN 620 205 781

Architect:

CAD DRAFT PTY LTD

ABN: 27 083 288 153
PH: 9555 8545
SUIT 4, 670 DARLING STREET, ROZELLE, NSW
P.O BOX 446 GLADESVILLE 2111

info@caddraftnsw.com.au

Scale:

**AS SHOWN
@ A1**

Project:

Date:

16.09.2022

Job Number:

170203

North:

N/A

Revision

Rev

Date

FOR \$4.55

Drawn

Checked

PT

BG

12 Riverview Road

Earlwood, NSW 2206

FOR \$4.55

PLANT SCHEDULE

Code	Botanical Name	Common Name	Expected Mature Height	Install Size	Spacing	Quantity
	TREES					
BAC MYR	Backhousia myrtifolia	Grey Myrtle	7m	75L	As Shown	4
CER CHI	Cercis chinensis 'Avondale'	Avondale Cercis	3m	75L	As Shown	1
ELA EUM	Elaeocarpus eumundi	Eumundi Quandong	10m	75L	As Shown	8
ELA RET	Elaeocarpus reticulatus 'Prima Donna'	Blueberry Ash	9m	75L	As Shown	4
TRI LUS	tristaniopsis laurina 'luscious'	Water gum	6m	75L	As Shown	2
	PALMS					
HOW for	Howea forsteriana	Kentia palm	3m	75L	As Shown	4
	CYCADS					
ZAM FUR	Zamia furturacea	Cardboard Palm	1.2m	75L	As Shown	3
	SHRUBS					
BRE obl	Breynia oblongifolia	Coffee Bush	3m	200mm	As Shown	3
BUR spi	Bursaria spinosa	Blackthorn	4.5m	75L	As Shown	5
BUX mic	Buxus microphylla var. Japonica	Japanese Box	1.5m	200mm	400mm Ctrs	51
KUN amb	Kunzea ambigua 'Rivan'	Tick Bush	2m	300mm	As Shown	3
PHI roj	Philodendron 'Rojo Congo'	Rojo Congo	2m	300mm	As Shown	8
PHI xan	Philodendron Xanadu	Xanadu	0.75m	200mm	As Shown	4
SAN sil	Sansevieria trifasciata 'Silver Queen'	Mother-In-Law-Tongue	0.75m	150mm	As Shown	30
ISO ane	Isopogon anemonifolius	Broad-leaved Drumsticks	1.2m	200mm	As Shown	9
VIB odo	Viburnum odoratissimum	Sweet Vibumum	2m	200mm	As Shown	28
WES blu	Westringia fruticosa 'Blue Gem'	Coastal Rosemary	1m	200mm	As Shown	3
	GRASSES AND GROUNDCOVERS					
AGA sno	Agapanthus hybrid 'Snowball'	Agapanthus Snowball	1.5m	140mm	As Shown	11
ALT den	Alternanthera dentata 'Little Ruby'	Alternanthera Little Ruby	0.4m	140mm	5/m2	35
DIA lon	Dianella longifolia	Pale Flax-lily	0.8m	140mm	5/m2	113
DIC rep	Dichondra repens	Kidney Weed	0.1m	140mm	11/m2	80
DIC sil	Dichondra 'Silver Falls'	Dichondra	0.3m	140mm	7/m2	56
GAR rad	Gardenia augusta 'Radicans'	Cape Jasmine	0.5m	140mm	4/m2	13
LAV ang	Lavandula angustifolia 'Hidcote'	English lavender	0.9m	140mm	4/m2	16
ROS off	Rosmarinus officinalis 'Prostratus'	Rosmarinus	0.3m	140mm	5/m2	8
THE aus	Themeda australis	Kangaroo Grass	1.5m	140mm	4/m2	82
	CLIMBERS					
CLE ari	Clematis aristata	Australian Clematis	Climbing	140mm	As Shown	30
PAN jas	Pandorea jasminoides	Bower Vine	Climbing	140mm	As Shown	29

PLANT IMAGES



Elaeocarpus reticulatus 'Prima Donna'



Elaeocarpus eumundi



Kunzea ambigua 'Rivan'



Breynia oblongifolia



Howea forsteriana



Zamia furturacea



Bursaria spinosa



Buxus microphylla var. Japonica



Gardenia augusta 'Radicans'



Clematis aristata



Pandorea jasminoides



Philodendron Xanadu



Rosmarinus officinalis 'Prostratus'



Dichondra repens



Agapanthus hybrid 'Snowball'



Lavandula angustifolia 'Hidcote'

Drawing Title
PLANT SCHEDULE & IMAGES

DWG No: S4.55-602

GEOSCAPHES

LANDSCAPE ARCHITECTS

Suite 215, 284 Victoria Av, Chatswood NSW 2067 Ph. (02) 9411 1485
www.geoscapes.com.au
ABN 84 620 205 781 ACN 620 205 781

Architect:

CAD DRAFT PTY LTD

ABN: 27 083 288 153
PH: 9555 8545
SUIT 4, 670 DARLING STREET, ROZELLE, NSW
P.O BOX 446 GLADESVILLE 2111
info@caddraftnsw.com.au

Scale:
N/A

Date:
16.09.2022

Job Number:
170203

North:
N/A

Project:

12 Riverview Road
Earlwood, NSW 2206

Revision					FOR \$4.55	
Rev	Date	Description	Drawn	Checked		
A	16.09.22	FOR \$4.55	PT	BG		